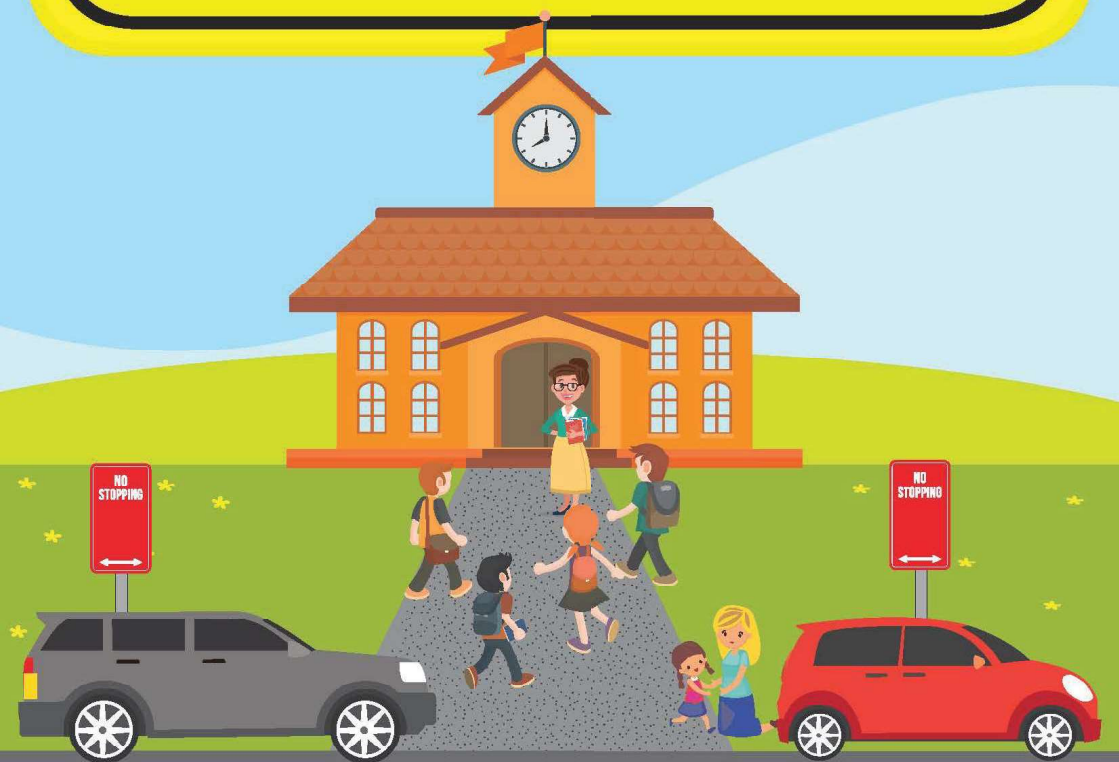


Illegal parking puts children's lives at risk



Council parking
officers are patrolling
school zones

ILLEGAL PARKING PUTS CHILDREN'S LIVES AT RISK

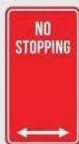
FACT

Children are small, harder to see, behave unpredictably and are extremely vulnerable. They need YOU to take extra care when driving and parking around school zones.



No Parking

You have 2 minutes to drop-off or pick-up. You must stay within 3 metres of your vehicle.



No Stopping

Do not stop for any reason. The first 10m from an intersection is a No Stopping zone.

Yellow kerb lines are also No Stopping zones.



Bus Zone

Only a public bus can stop in a bus zone.



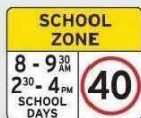
Mobile Phones

Know the rules. Illegally using your phone is dangerous. Avoid the temptation.



May be subject to Double Demerits

Speeding Offences



40km/h is the limit. Children are about, so slow down in school zones.



May be subject to Double Demerits

Pedestrian Crossings

1. In a queue of traffic, no part of your vehicle can stop on a pedestrian crossing.



2. It is unsafe to let your child in or out of a vehicle at a pedestrian crossing as this is a No Stopping zone.

Driveways & Footpaths

Do not park on or across a driveway or footpath.



U turns

Illegal U turns in a school zone are dangerous.



Double Parking

Double parking is illegal and is very dangerous in a school zone.



*Fines current as of July 2020. Fines and demerit points are subject to change. For more information, go to www.rms.nsw.gov.au and search "school zone offences".